



## Elitech RC-4 Temperature Data Logger with External Temp Sensor Audio Alarm -40~+85°C

SKU: ELIRC4TPWH  
Manufacture Warranty period: 12 months  
Country of Origin: USA

### Introduction

Temperature data logger Elitech RC-4 features an alarm indicator on the display, a sound alarm, and a replaceable battery. A reason why it satisfies the dynamic and growing demand for cost-effective temperature data loggers in cold chain supply. With Elitech PDF temperature data logger, users can export data in PDF or Excel via Elitech data management software.

For convenience, Elitech designs these temperature data loggers with both internal and optional exterior temperature sensors. They are highly sensitive and able to detect slight temperature changes. This makes Elitech PDF temperature data loggers a better alternative for pharmaceuticals, food, medical cabinets, laboratories, cold storage or the breeding industry.

Note: For first-time use, please download Elitechlog free software then connect the logger to a WIN or MAC system to set the parameters such as log interval, temperature unit( °F/°C ), alarm limit, and so on. When you click the " Save Parameter" button, the time on the logger will sync with your local time.

### Features

- Reusable, 1 internal temperature sensor, 1 external temperature sensor with a wide range: -40°C~85°C/-40°F~185°F
- Alarm indication, buzzer alarm, long battery life
- Free MAC/WIN supported software; adjustable log interval:10s-24h; Selectable temperature unit: °F and °C
- 16,000 data points, with USB/PC connection cable
- Data export in PDF/EXCEL via data management software

### Buzzer Alarm



## Specifications

Temperature	
Measuring range (Built-in)	-30°C ~+60°C / -22°F~140°F
Measuring range (External Sensor)	-40°C ~+85°C / -40°F~185°F
Accuracy	±0.6°C (-30~60°C);
	±1.2°C (Others)
Resolution	0.1°C
Record interval	10s~24hour adjustable
Sensor	Internal NTC thermal resistor
Communication interface	USB interface
Power supply	CR2450 battery or power supply via USB interface
Size	approx. 84(L)x44(W)x20(H)mm (3.3 x 1.73 x 0.79 inch)
Weight	approx. 60g



## Package includes

1 x RC-4 Temperature Datalogger
1 x External Sensor (1.1m)
1 x USB Cable
1 x User Manual
1 x Battery (CR2450)

Package includes: 1 x RC-4 Data Logger; 1 x External Sensor Probe;  
1 x USB Cable; 1 x Validation Certificate; 1 x User Manual

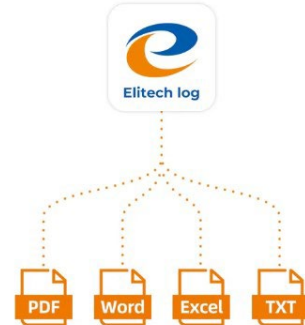
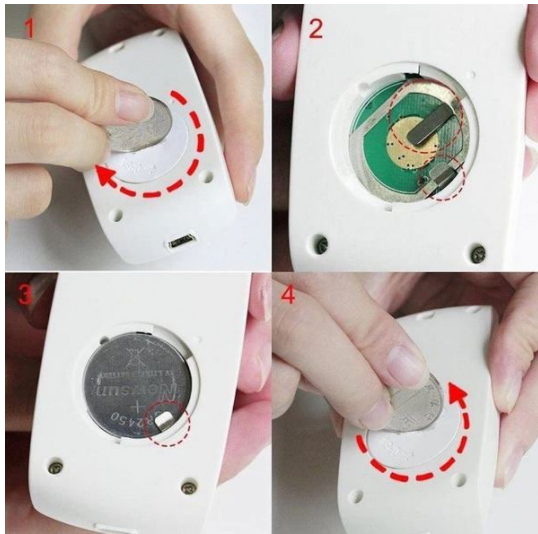


## Internal Sensor & External Sensor

Switch between the internal sensor and external sensor according to a different application and your preference.



## Export Data via Elitech Software



Data Report																																				
File created on:2022-07-10 11:36:45																																				
<b>Device Information</b>																																				
Device Model	RC-4	Logging Interval	5m	Start Time																																
Total Spacc	16000	Button Stop	Disable	Temperatures Unit																																
Storage Mode	N/A	Alarm Tone	Disable	°C																																
Max Button	Disable	Alarm Logging Interval	N/A																																	
<b>Trip Description</b>																																				
Serial Number	EF5225100308																																			
Trip Description	RC-4 Data Logger																																			
<b>Alarm Settings</b>																																				
Alarm Status																																				
H1-30.0°C	Normal																																			
Idol Zone																																				
L1-10.0°C	Normal																																			
<b>Summary</b>																																				
Data Points	7	Mean Kinetic Temperatures (M)	27.3																																	
First Reading	2022-07-10 11:04:17	Last Reading	2022-07-10 11:34:17																																	
Minimum(Temperature)	23.8°C	Minimum(Temperature)	15.5°C																																	
Average(Temperature)	27.2°C	Logging Duration	00:01:50M:05S																																	
First Alarm(Temperature)	N/A	Minimum(Humidity)	N/A																																	
Maximum(Humidity)	N/A																																			
Average(Humidity)	N/A																																			
First Alarm(Humidity)	N/A																																			
<table border="1"> <thead> <tr> <th>No.</th> <th>Time</th> <th>Temperature °C</th> <th>Humidity%</th> </tr> </thead> <tbody> <tr> <td>1</td> <td>2022-07-10 11:04:17</td> <td>23.8</td> <td></td> </tr> <tr> <td>2</td> <td>2022-07-10 11:09:17</td> <td>23.5</td> <td></td> </tr> <tr> <td>3</td> <td>2022-07-10 11:14:17</td> <td>23.3</td> <td></td> </tr> <tr> <td>4</td> <td>2022-07-10 11:19:17</td> <td>23.3</td> <td></td> </tr> <tr> <td>5</td> <td>2022-07-10 11:24:17</td> <td>23.1</td> <td></td> </tr> <tr> <td>6</td> <td>2022-07-10 11:29:17</td> <td>25.4</td> <td></td> </tr> <tr> <td>7</td> <td>2022-07-10 11:34:17</td> <td>15.5</td> <td></td> </tr> </tbody> </table>					No.	Time	Temperature °C	Humidity%	1	2022-07-10 11:04:17	23.8		2	2022-07-10 11:09:17	23.5		3	2022-07-10 11:14:17	23.3		4	2022-07-10 11:19:17	23.3		5	2022-07-10 11:24:17	23.1		6	2022-07-10 11:29:17	25.4		7	2022-07-10 11:34:17	15.5	
No.	Time	Temperature °C	Humidity%																																	
1	2022-07-10 11:04:17	23.8																																		
2	2022-07-10 11:09:17	23.5																																		
3	2022-07-10 11:14:17	23.3																																		
4	2022-07-10 11:19:17	23.3																																		
5	2022-07-10 11:24:17	23.1																																		
6	2022-07-10 11:29:17	25.4																																		
7	2022-07-10 11:34:17	15.5																																		

Data export in Excel Format

**Data Report** File created on: 2022-07-10 11:36:45

**Device Information**

Device Model	RC-4	Probe Type	Temperature
Device Number	440220220308	Firmware Version	V0.2
Total Spacc	16000		

**Trip Description**

Trip Number	N/A
Trip Description	RC-4 Data Logger

**Config Info**

Button Stop	Disable	Logging Interval	5m
Max Button	Disable	Alarm Logging Interval	-
Alarm Tone	Disable	Storage Mode	-

**Alarm Threshold**

H1 Above	30.0°C	Low	Ok
H2 Below	10.0°C	Low	Ok
L1 Below	10.0°C	Low	Ok

**Summary**

Max	27.2°C	Start Time	2022-07-10 11:04:17
Min	15.5°C	Stop Time	2022-07-10 11:34:17
Average	27.2°C	Logging Duration	00:01:50M:05S
Max H	27.2°C	Total Memory	7
Alarm Threshold	N/A	Current Readings	7

www.elitech.com 1/2 File Name: 440220220308

in PDF Format